



DESCRIPTION:

World Compattino™ is a self-contained, compact instrument cluster designed especially for off-highway equipment and specialty vehicles. The cluster is an update to a well established Maxima design, recently selected by leading CE and AG OEMs for use in vehicles sold in global markets. There are 2 models: Base, in an analog format, and Deluxe in CAN-bus. Units feature stepper motors, LED lighting and LCD or dot-matrix displays for improved reliability and user functionality.

FEATURES:

- ▶ "Standard" platform—reduces NRE and NPD time
- ▶ Flexible architecture: Analog or CAN
- ▶ Fuel and temperature gauges; tachometer, 3k RPM
- ▶ Stepper motors for improved reliability & accuracy
- ▶ Green and red zones for dials
- ▶ UV and scratch-resistant overlay design
- ▶ Single-line LCD or dot-matrix (128 x 64); LED backlit
- ▶ 19 LEDs; LED backlighting for gauges and pointer
- ▶ Easy installation in panel and connection to harness

INPUTS/OUTPUTS (SUMMARY):

- ▶ 12 configurable STB or STG inputs
- ▶ 1 CAN port (configurable as STB or STG)
- ▶ 4 STG only inputs
- ▶ 3 analog inputs
- ▶ 1 ignition, 1 frequency, 1 power and 1 ground input
- ▶ 1 output driver, high- or low-side type

COMMUNICATION LINK (DELUXE MODEL):

- ▶ SAE J1939 CAN interface

PIN ASSIGNMENTS:

PIN NUMBER/INPUT TYPE (NAME)	
1. STB/STG (Config_IN3)	14. HS/LS Driver (S.O)
2. STB/STG (Config_IN4)	15. CAN High(Config_IN14_C-)
3. STB/STG (Config_IN5)	16. CAN Low (Config_IN13_C+)
4. STB/STG (Config_IN6)	17. Frequency (Freq_Input)
5. STB/STG (Config_IN7)	18. Analog-Res. (Analog_IN1)
6. STB/STG (Config_IN8)	19. Analog-Res. (Analog_IN2)
7. STB/STG (Config_IN9)	20. Analog-Res. (Analog_IN3)
8. STB/STG (Config_IN10)	21. STG (STG1)
9. STB/STG (Config_IN11)	22. STG (STG2)
10. STB/STG (Config_IN1)	23. STG (STG3)
11. Power Input (Battery +)	24. STG (STG4)
12. STB/STG (Config_IN2)	25. STB/Power (Ignition)
13. Ground (Ground)	26. STB/STG (Config_IN2)

LEGEND: "STB" = switch-to-battery, "STG" = switch-to-ground, "HS" = high side, "LS" = low side, "S.O." = switched output, "RES" = resistive type input.



Base analog World Compattino™ on left; Deluxe CAN model on right

ELECTRICAL:

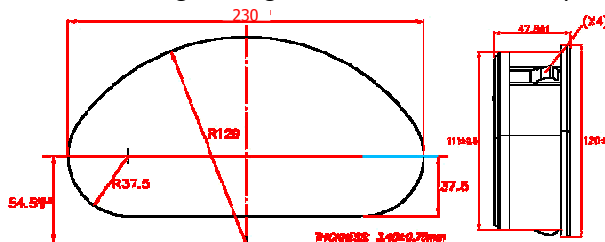
- ▶ Voltage: 12V nominal, 9-16V range; 24V optional
- ▶ Electrical protection: Reverse polarity, transients including load-dump, over-voltage and ESD
- ▶ Red, green, amber and blue LEDs
- ▶ EMC per ISO 17366

ENVIRONMENTAL:

- ▶ Operating/storage temperature: -40°C to +85°C
- ▶ Sealing: IP 67 front, IP 66 rear
- ▶ Compliant with SAE standards

PHYSICAL CHARACTERISTICS:

- ▶ Overall dimensions: 230 x 120 x 47.5 mm
- ▶ Weight: 0.44 kg (0.96 lbs)
- ▶ Mounting: Panel installation via 4 tabs
- ▶ Materials: Engineering resin enclosure, PC overlay

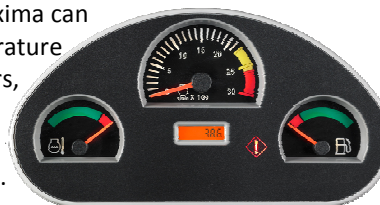


CONNECTOR:

- ▶ 26-pin Amp connector

CUSTOMIZATION OPTIONS:

Customization is possible, e.g. overlay and dials colors and graphics, LED configurations, electrical matches & tachometer inputs. Deluxe CAN model includes a dot-matrix display, but the single-line LCD can be used for this model too. Maxima can provide fuel, temperature and pressure senders, as well as speed sensors to ensure a "matched" system.



Consult with your salesperson for more details.

Your 6-Sigma Instrumentation and Controls Partner™

© 2011 Maxima Technologies & Systems, LLC

Maxima Technologies & Systems, LLC • 1811 Rohrerstown Rd. • Lancaster, PA • 17601 • 1-717-581-1000 • www.maximatech.com (WC-11-1)